

660SJ Telescopic Boom Lift



660SJ Telescopic Boom Lift

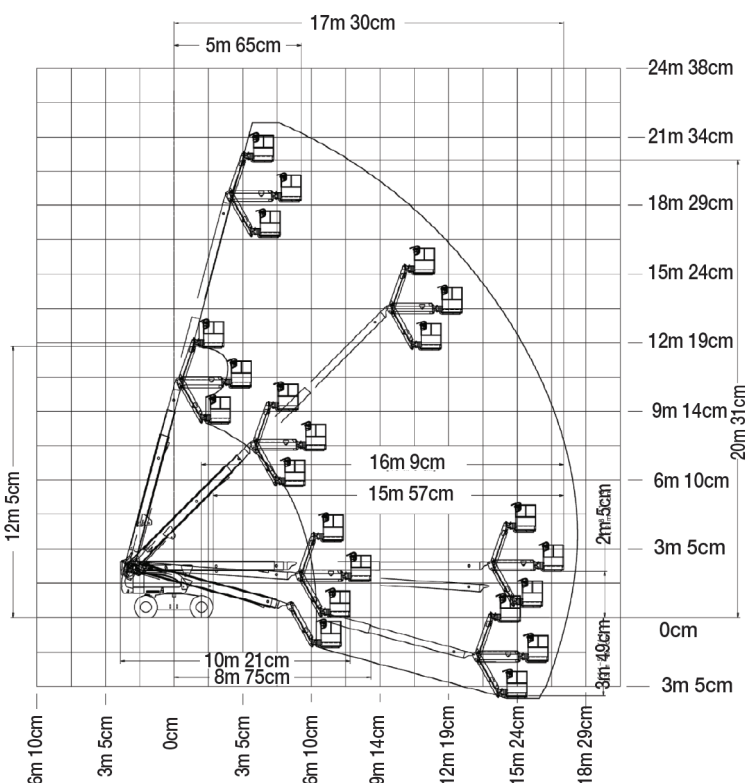


QUESTIONS TO ASK

- What are the ground conditions in the work area?
- What are the site conditions travelling around the site?
- What is the working height needed for the job?
- What is the outreach required for the job?
- Do you need an extension lead outlet in the platform?
- Will an inbuilt Miller 5.5kVA generator make the job easier?

KEY SELLING POINTS

- Smooth control, proportional hydraulic 4 wheel drive, with two speed ranges
- Proportional lift and swing controls at the platform for fast functionality
- Oscillating front steer axle with the boom within 10 degrees of centre, assists 4 wheel drive traction
- 4 wheel steer
- Jib boom and basket rotate
- Cylinder boots protect cylinder rods from overspray and contaminants
- Lug pattern urethane filled tyres
- Multi axis 4 degree level sensor
- Plug in JLG analyser at platform and base to indicate system functions for servicing and adjustment
- Deutz Engine D2011 L04. High speed, 4 cylinder, liquid (oil cooled), 48.5kW engine pre-glow and post-glow feature reduces emissions



SPECIFICATIONS

Performance:

Platform Height (max.)	20.31m
Working Height	22.31m
Platform Rotation Angle	180°
Jib Raise Angle	70°
Jib Lower Angle	60°
Jib Articulation Range	130°
Maximum Horizontal Outreach	17.3m
Lift Time	46-60 sec
Lower Time	33-43 sec
Platform Capacity	230kg
Slewing Angle	360°
Continuous Slew	Yes

Dimensions:

Stowed Length	10.21m
Stowed Height	2.56m
Overall Width	2.42m
Wheelbase	2.48m
Ground Clearance	0.30m
Platform Width	2.44m
Platform Length	0.91m
Overall Jib Length	1.83m
Tailswing	1.14m
Axle Oscillation Standard	Std

Power:

Power Source	Diesel
Engine Make	Deutz
Engine Model	D2011 L04
Engine Power	48kW
DC Voltage	12V
DC Power	1000CCA
Genset	5.5kVA Miller
Auxiliary Power	12V Pump

Travel:

Tyre Size	15 x 19.5
Tyre Type	Urethane Filled
Inside Turn Radius	1.65m
Outside Turn Radius	3.45m
Drive Speed Elevated	0.8km/h
Gradeability with 4WD	45%
Drive Speed - 4WD	6.8km/h
Maximum Ground Bearing Pressure	5.27kg/cm²

Weights and Capabilities:

Fuel Tank Capacity	151.42 Ltr
Hydraulic Tank Capacity	121.13 Ltr
Operating Weight	13,550kg